



Parcel Hive  
Automatic Parcel Terminals

**Innovation.**  
**Efficiency.**  
**Automation.**

Cold/Froen Locker Range





## Who are Parcel Hive™?

Parcel Hive™ offers a wide range of products for process automation within various businesses that need an infrastructure of smart lockers, smart screens and ordering systems.

We design and produce high quality, efficient and appealing automated parcel and food smart lockers that provide a variety of solutions.



## Why Parcel Hive™?

- Full process from concept to production
- World class software
- Logistical deployment
- Services for installation
- 24/7 maintenance and support

Parcel Hive™ take care of everything  
from start to finish



## The Parcel Hive™ Process

### 1. Concept

We work with your business to determine your key objectives for a smart locker system, ensuring a tailor-made service. We look at the space available and work out what would be the optimum way to meet your needs.

### 2. Development

We look after the design and manufacturing of the whole process, including the solution and software.

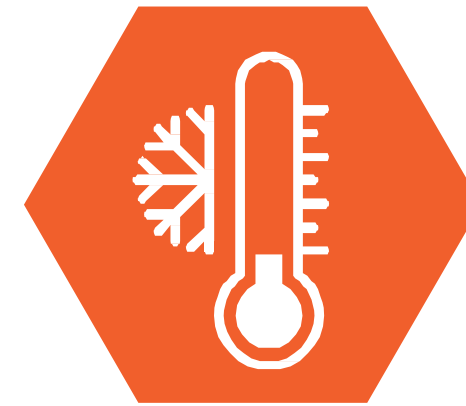
### 3. Implementation

We deliver and fully install all units ensuring everything is tested and ready for immediate use.

**Main areas  
of expertise  
for Parcel  
Hive™:**



Hot food  
delivery



Refrigerated  
storage



Freezer  
storage



Ambient  
storage



Click &  
Collect



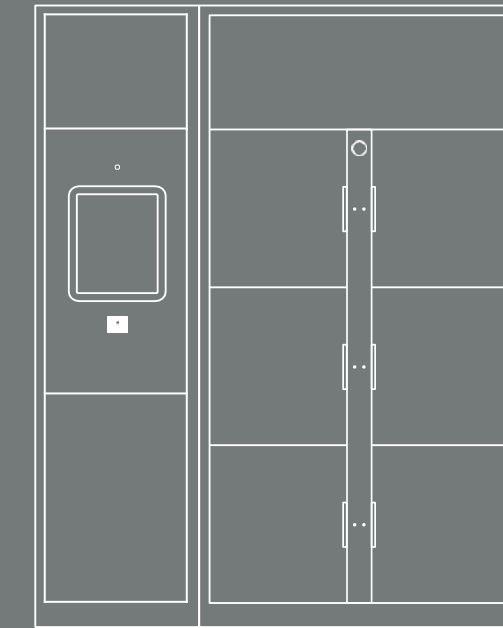
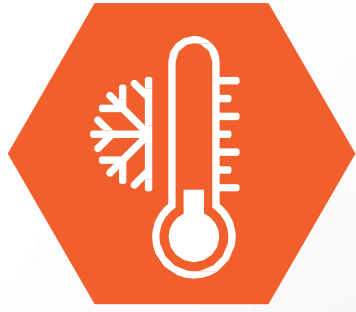
Delivery  
point



Bike / Scooter  
storage



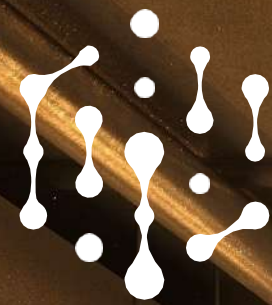
Smart device  
charging



## Cold locker (frigi/frozen)

Areas of use:

- Restaurant food courts
- Quick service restaurants
- Pharmacy and hospital
- Grocery delivery pickup
- Laboratory
- And more....





# The Range







## Equipment implementation:

- E-commerce – post and delivery
- Click & Collect
- Health Care - Laboratory sampling pharmacies
- Equipment – Storage and exchange
- Food & Café – Delivery and takeaway
- Product Sale – Direct sales of products
- Storage – Luggage and laundry
- Industry – Storage of equipment, bikes and scooters
- Factories
- Retail Stores
- Restaurants
- Universities
- Hospitals
- Catering
- Offices
- Canteens
- Online Shopping
- Football Clubs
- Events



## Main Units

Operational system	Cyber Hive™
Screen	21" (FullHD)(1280*1024) infrared touch screen, LED back light, contrast ratio 1000:1 350-1000cd/m2, touch response time ≤20ms
Computer Hardware	Intel Dual-core N2600, 1.6GHz, low consumption (3.5W) NMI10 chip, 2GB RAM, 64GB SSD
Connectivity	2 x 10M/100M Ethernet interfaces 6 x RS232 series ports 6 x USB, 1 x VGA port 1 x HDMI, PS/2 & audio output
Internet connection	RJ45 (LAN) + Wifi. 4G industrial router optional module.
Power supply and back up	AC110-240V, 50-60HZ, UPS - 500VA
Additional interfaces	Metal English keypad, Scanner (1D/2D/cellphone/QR code), Speaker (8Ω/2W), Card reader (IC card), Camera (Wide angle 150°)



Integration Options

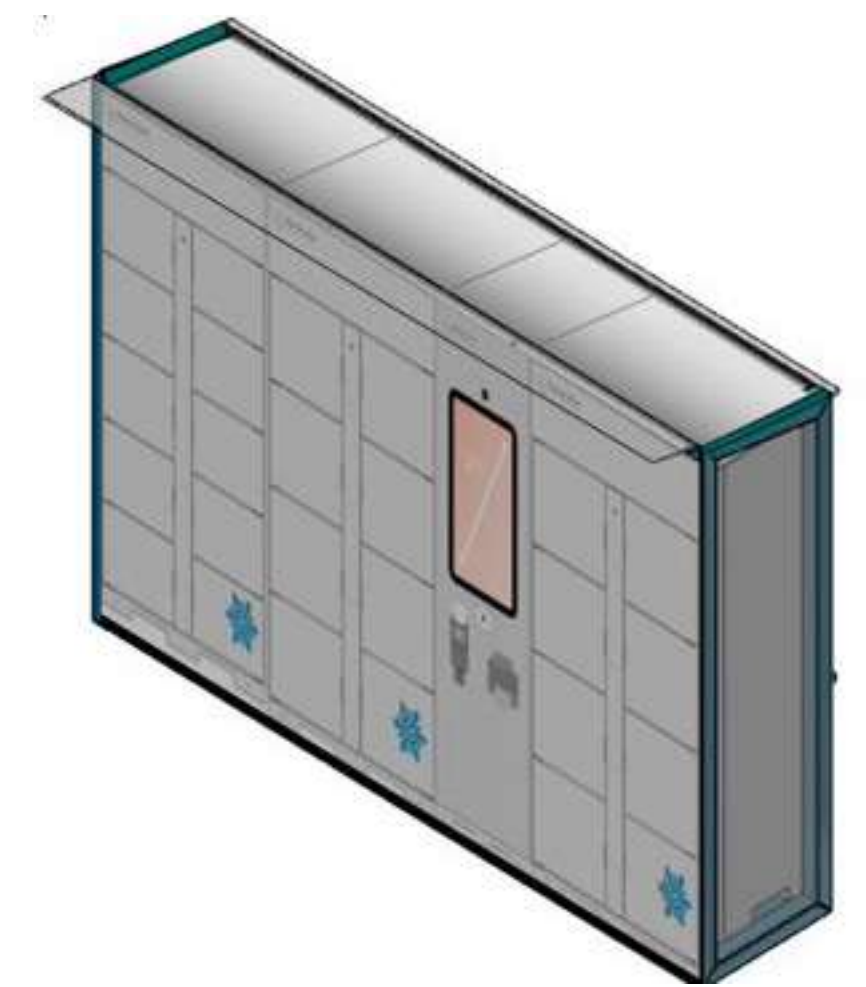
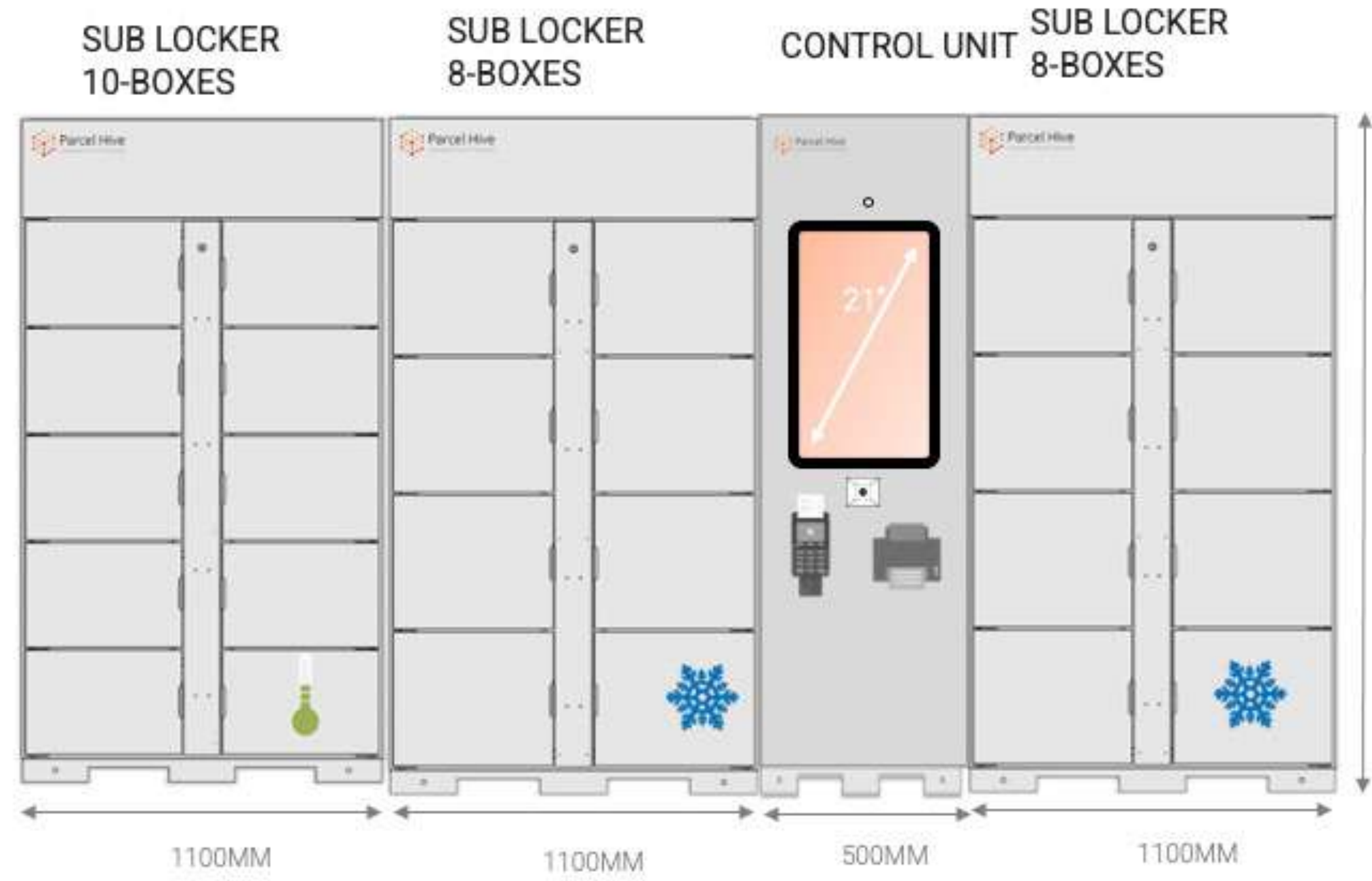
## Sub Units

Multiple options available:

- 6 doors
- 8 doors
- 10 doors
- 12 doors



# Example Configuration



# Locker solution process



1.

Customer order



2.

Order processed



3.

Vendor receives order



4.

Order prepared



5.

Employer "Deposits" order inside designated locker



6.

Software sends signal, notifying the person picking up that the order is ready



7.

Customer or driver receives notification



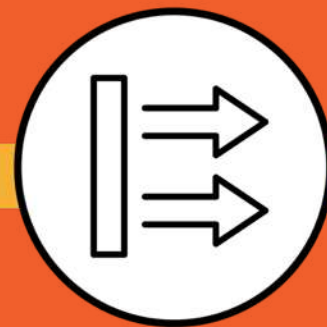
8.

Customer or driver chooses "Collect" on the locker



9.

Customer or driver enters unique 4 digit pin on the locker display



10.

Door automatically opens and contents can be removed



11.

If using a driver, the customer receives a notification that the order is on the way



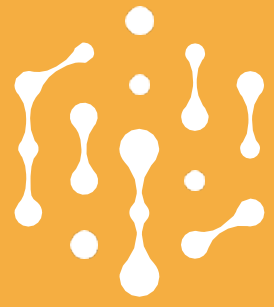
12.

Customer receives order and system signs off



## Benefits of using smart lockers:

- Queue reduction
- Vacant lockers can be rented out
- Easy to maintain
- Free up time for employees
- Contactless service
- 24/7 monitored support
- Powerful advertising platform
- Increase your capacity of deliveries
- Safe and secure
- Cost efficient machines
- Can be stand alone or integrated
- Can be fully branded
- Bacteria and virus resistant (killing 99.9% of viruses, bacteria and fungus)
- Made to minimise electricity consumption
- Smart device upgrades available including: order Kiosk, order machine, fulfilment centre, self check out, screen display and printer



## Operation process solutions:



**QR code reader**



**Barcode reader**



**Pin code device**



**QR code reader**

## Cyber Hive Software

All of the Parcel Hive™ smart locker solutions are integrated on our unique Cyber Hive software solution that runs and works on all machines.

Available as an app on your smartphone or desktop site, you can operate a fleet of lockers and have complete control of your machines.

Key aspects of Cyber Hive:

- All information is stored in a secured cloud account
- All data is encrypted and visible only to you
- Receive live comprehensive statistics about usage and efficiency
- Integration with external systems
- Ability to add own wallet integration
- Advertising availability based on demographics
- Ability to up-sell at any time
- Manage payments and save from commissions

Our Cyber Hive core locker management system has a monthly fee that includes hosting, maintenance and support



## Why trust Parcel Hive™ with your project?

- Vast experience in locker projects across many different use cases and industries
- All production and design completed in-house
- High quality materials
- High quality electronics
- Comprehensive range of options
- Parcel Hive™ installation teams across Europe
- Produced in the EU
- Short lead times on delivery and installation of locker systems



	Cold/Frozen
Power	AC110-240V, 50-60HZ
Temperature	Cool – 3-7 degrees C Frozen – 18 degrees C
Internet Connection	Open Internet / 4G Router
4G Data Allowance (if required)	5-10GB per month
Weight	150KG per unit
Overall Power Consumption	400W (cooler) at peak
Cooling Method	Forced air cooling/Compressor
Insulation	Foam Insulation Padding
Refrigerant	R290
Certifications	certification and comply with the ISO 9001, ISO 27000 standards.
Doors	Solid Only
Paint	Any standard RAL colour available
Finish	Gloss/Matt/Eggshell
Branding	Vinyl graphics available upon request

# Technical Information

## CLICK&COLLECT

WE PROVIDE FULL SOLUTION LOCKER SYSTEMS.



**OPENINGS** ELECTRONIC  
LOCKS SYSTEM TESTED

**500 000**

**QUALITY ELECTRONIC LOCKS**



**SPECIAL METAL COATING – OPTIONAL**

Our lockers have special powder coating for outdoor application, anti-graffiti effect.



**FULL/EMPTY DETECTION – OPTIONAL**

Infrared volume detection sensor for full / empty locker status.



**OPEN LOCK DETECTION – OPTIONAL**

Infrared lock detection sensor to make sure that every box is closed and energy efficient.



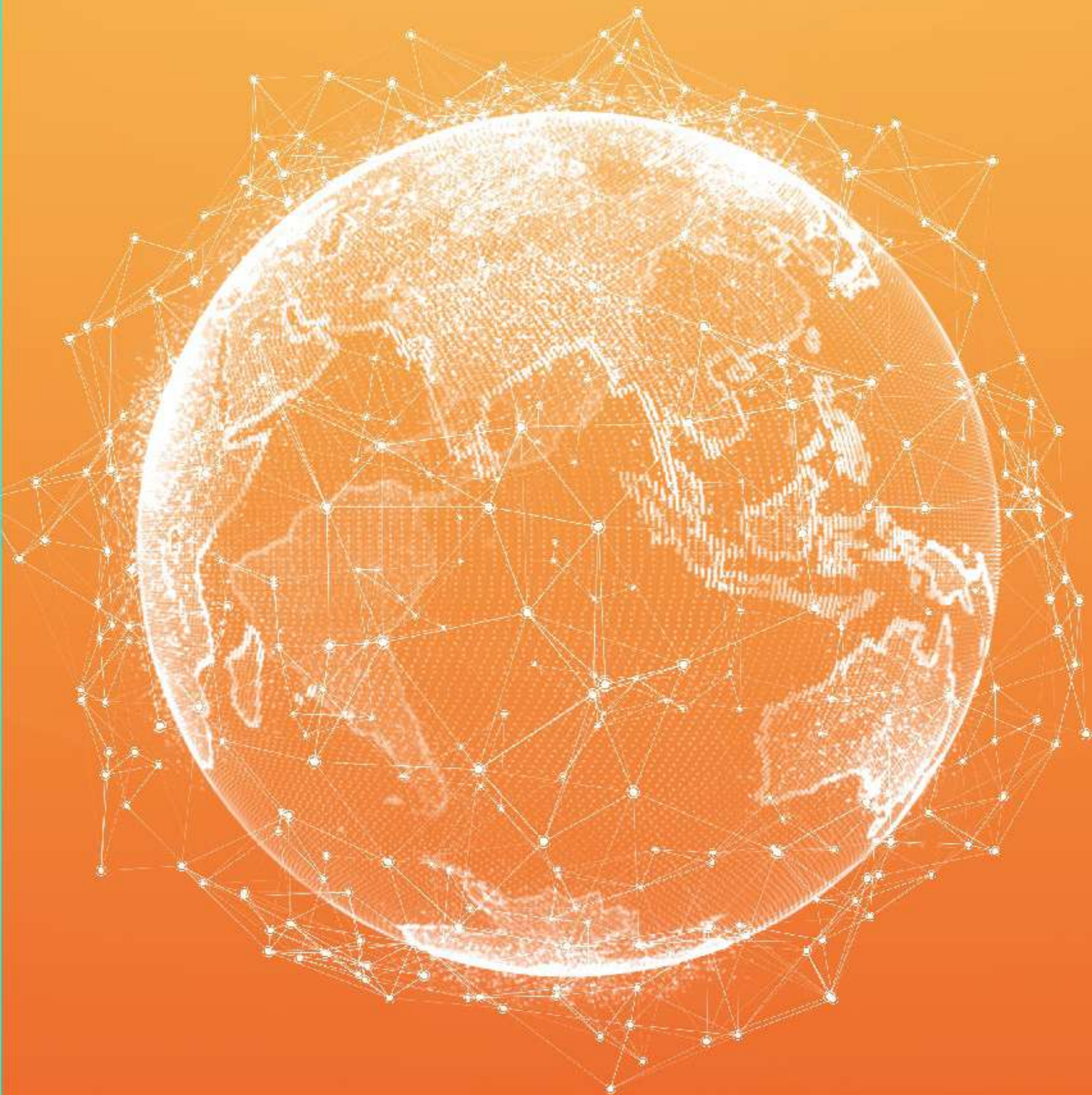
**SECURITY SURVEILLANCE – OPTIONAL**

CCTV Monitor with 1 TB storage and 2 Monitoring probes.



# In Real Life





## Parcel Hive™ Facilities

Spain – Madrid  
HQ -C/Colegiata N18, 28012, Madrid, España + 34 (91) 0607378

United Kingdom - Leicester  
Trade and Support Office

Austria – Vienna  
DACH Region Trade and Support Office

France – Paris  
Trade and Support Office

Bulgaria – Botevgrad  
Design, Production and Assembly facility in the European Union.

Bulgaria – Blagoevgrad  
Software division

Thank you for your time, we look forward to  
helping you with your project

Main Phone : + 34 (91) 0607378  
UK Phone : +44 0116 2163434  
Email: [info@parcelhive.net](mailto:info@parcelhive.net)  
Web: [www.parcelhivenet](http://www.parcelhivenet)